

Understanding our value chain water footprint

We have mapped our water footprint by understanding the volume of water we use across the value chain and where in the world the water is being used.

Supply chain

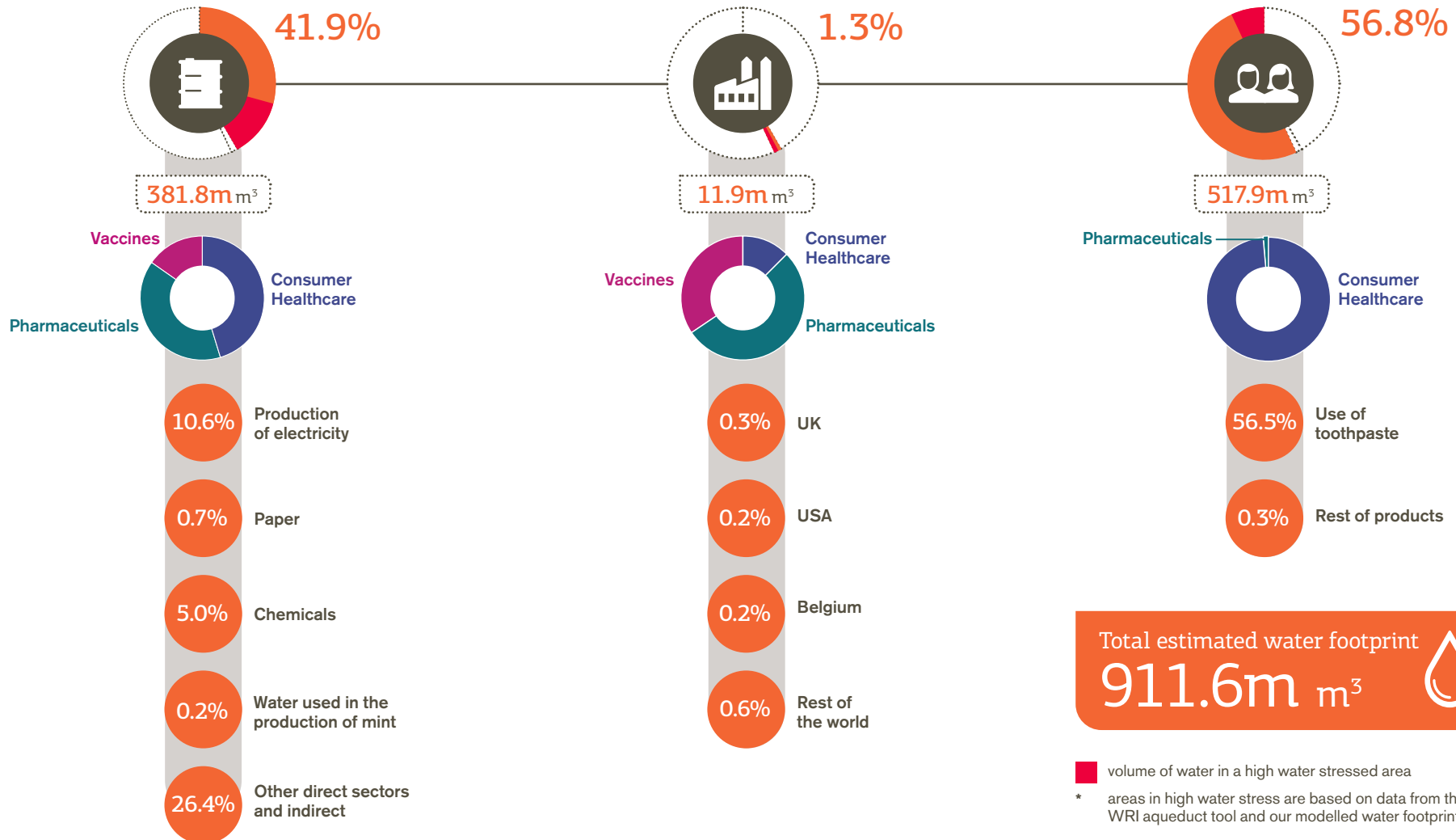
The water used in manufacturing or growing the raw materials GSK buys from other companies.

GSK's operations

The water we use in our labs, factories and offices.

Use of our products

Water use by patients and consumers using our products.



■ volume of water in a high water stressed area
 * areas in high water stress are based on data from the WRI aqueduct tool and our modelled water footprint